

BIOL4907 Field Study

Field Trip to Singapore

May 30 - Jun 3, 2016

Garden City Exploration **Nature Appreciation** **Overseas Learning Experience**

Biology Programme, School of Life Sciences

Itinerary

Day	Attractions
1	<ul style="list-style-type: none">• Arrived at Singapore• Tropical Marine Science Institute, National University of Singapore
2	<ul style="list-style-type: none">• Department of Biological Sciences, National University of Singapore• Sungei Buloh Wetland
3	<ul style="list-style-type: none">• Lee Kong Chian Natural History Museum• Singapore Botanic Gardens
4	<ul style="list-style-type: none">• Imbiah Nature Trail• MacRitchie Nature Trail• Telok Blangah Hill
5	<ul style="list-style-type: none">• Gardens by the Bay• Departing for Hong Kong

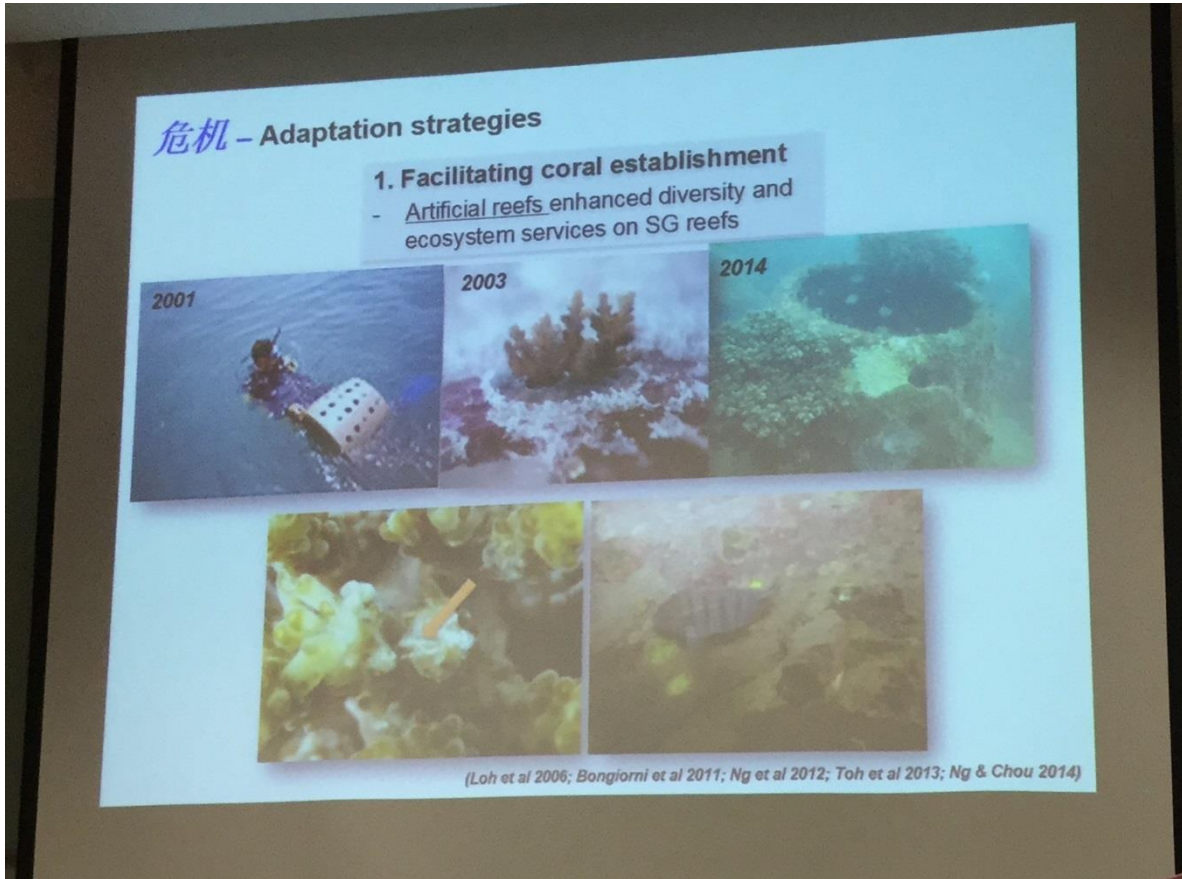
Hong Kong → Singapore



UTown, NUS



Talks in Tropical Marine Science Institute



Talks in Department of Biological Sciences

DBS Past - Present

Logos: CBS, MBI, NUS, Lee Kong Chian Natural History Museum, DARWIN Online, WALLACE Online

Environmental & Evolutionary Biology (EEB)

Molecular, Cell, Developmental Biology (MCDB) (2016) Biophysical Sciences (BPS)

Biological Sciences (1996)

Botany (1942) Zoology (1950)



Graduate Program

A program leading to Doctor of Philosophy (PhD) and Master of Science (MSc) degrees by life science research, with one of the largest research graduate student bodies in the campus and over 60 academic supervisors

From 26 different countries
PhD: 240; MSc: 7
Total: 247

Thailand	2	China	3
Singapore	59	Malaysia	12
India	1	Chile	26
Taiwan	1	USA	1
Philippines	1	USA	1
Brunei	2	UK	1
Turkey	5	Iran	1
Sweden	1	UK	1
Sri Lanka	2	France	1
South Korea	1	Ethiopia	2
Philippines	1	Argentina	1
Bahrain	1	Denmark	1
Kenya	1	Egypt	3
Mauritius	1	Ireland	1

(as at 2 Mar '16)

The SE Asian Biodiversity Hotspot

Sumatra, Java, Bali, Sulawesi, Moluccas, Philippines, Irian Jaya, New Guinea, Wallacea

Fig. 3. The manually edited vegetation map of Singapore.

Legend:

- Water
- Non-managed Vegetation
- Managed Vegetation
- Mangrove
- Freshwater Swamp Forest
- Freshwater Marsh

Scale: 0, 5, 10, 20 km

Yee et al.

The evolution of novel complex traits

scallop eyes, feathers, eyespots, insect wings, horns

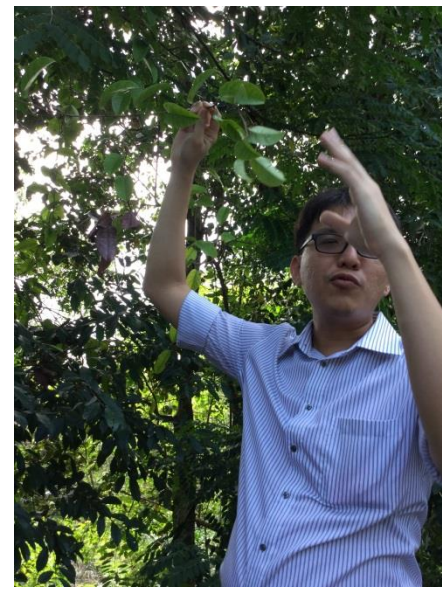
How to measure animal personality?

Aggressiveness, Risk-taking tendency, Exploration, Social preference

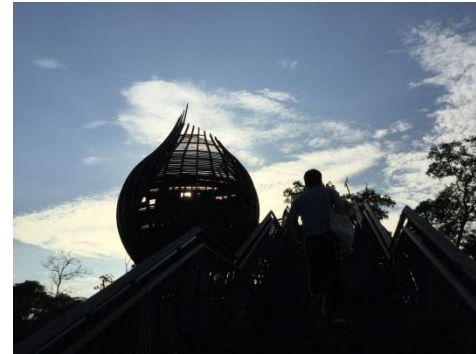
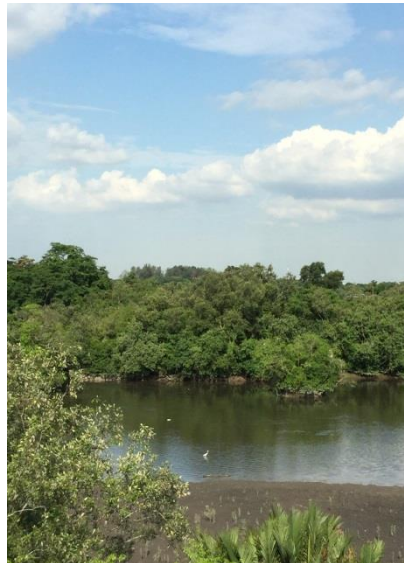
Discussions with DBS Personnel



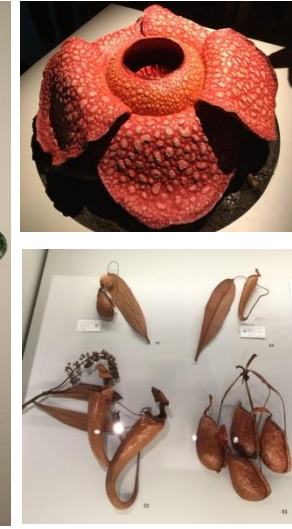
Lab Visit and Walk on the Ridge



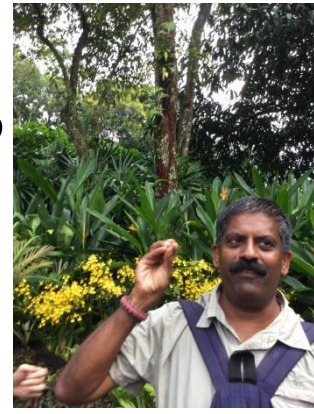
Sungei Buloh Wetland



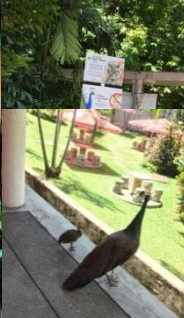
Lee Kong Chian National History Museum



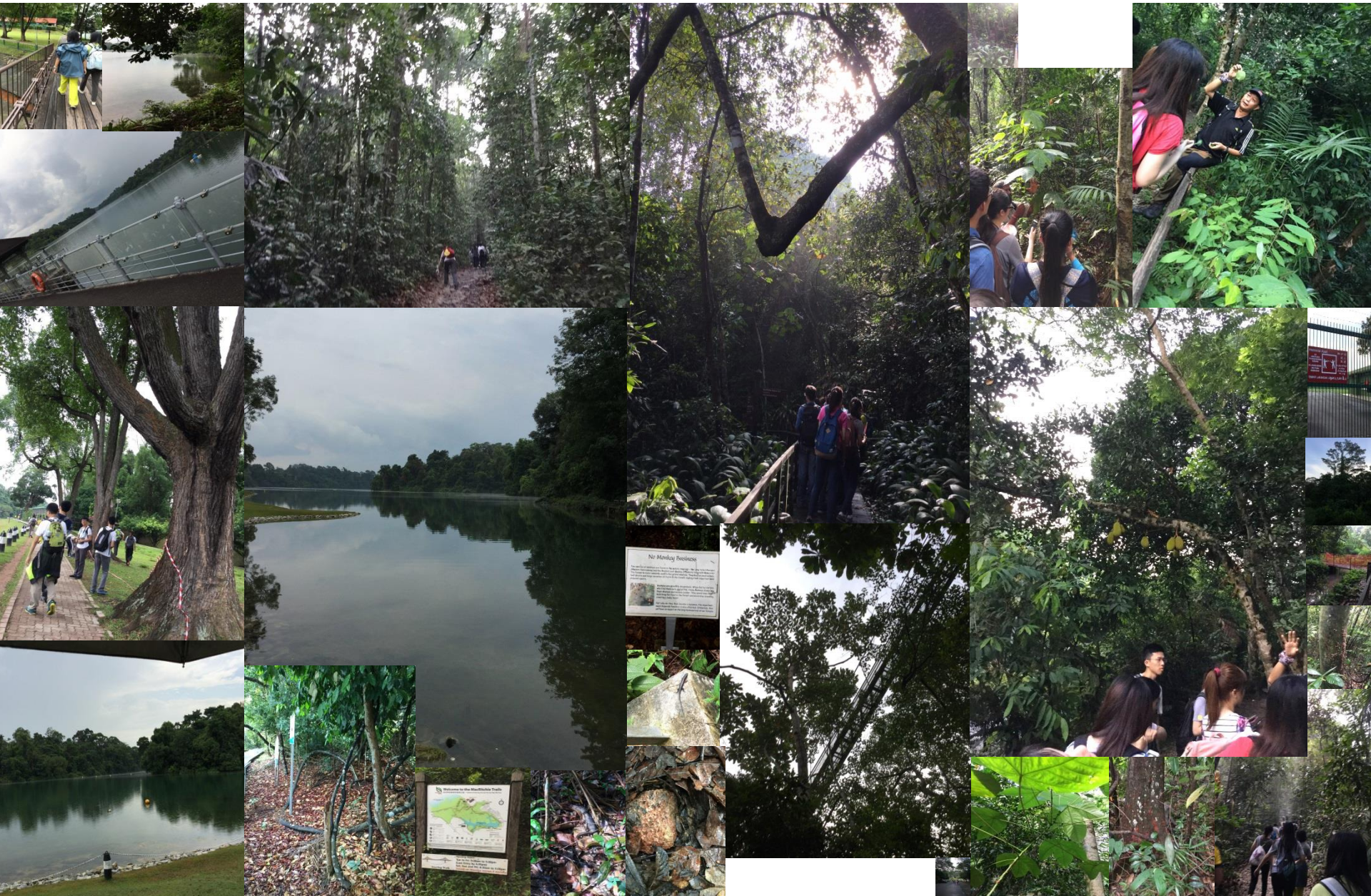
Singapore Botanic Gardens



Nature Walk at Sentosa



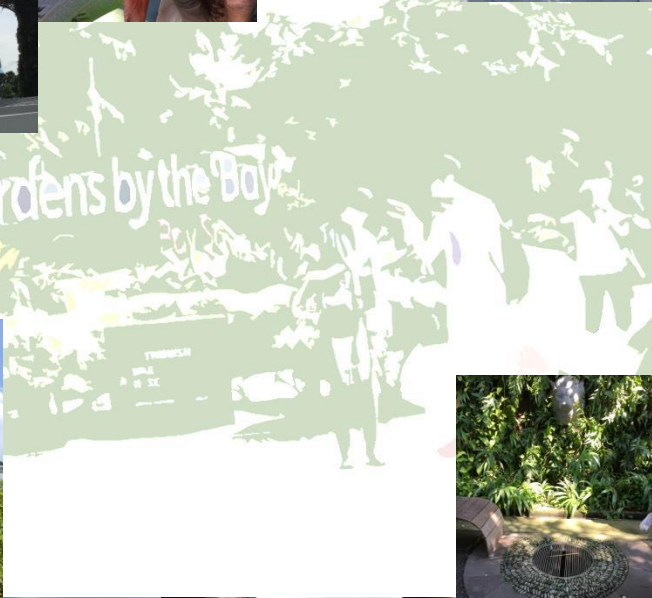
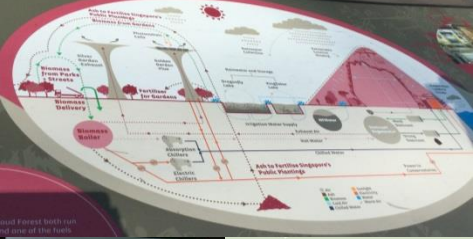
Nature Walk at MacRitchie



Night Walk at Telok Blangah Hill



Gardens by the Bay





NATIONAL
ORCHID
GARDEN
SINGAPORE

School Holiday
Special
Free Admission
for National Orchid Garden



Thank you!

**Your continuous support
will be very much appreciated!!**